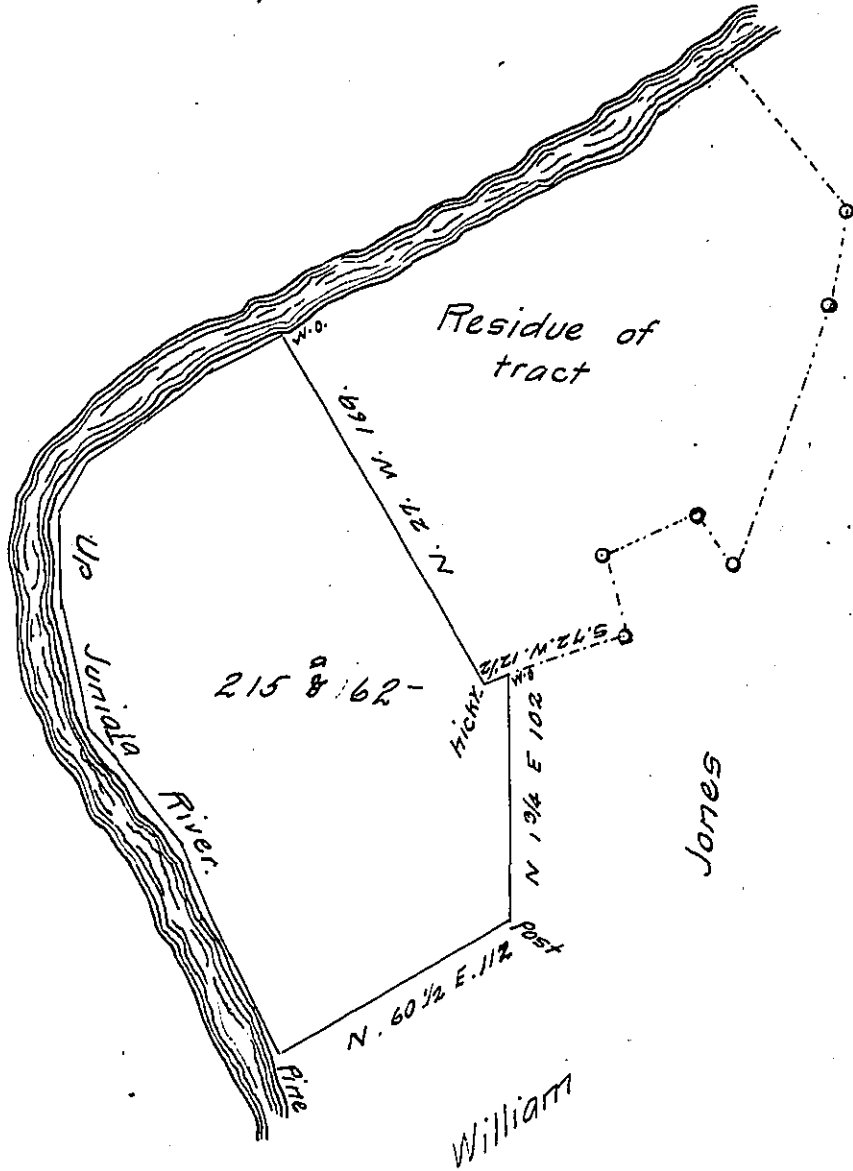


Courses & from W.O. up river

- S 72 W 34
- S 54 W 40
- S 57 W 27
- S 33 W 25
- S 1 W 37
- S 11 E 56
- S 37 E 60 1/2
- S 23 1/2 E 54 3/4
- S 26 E 49 1/2

thence by William Jones



Draught of two hundred and fifteen acres and sixty two perches of Land with six per Cent for Roads situate in Derry township in Mifflin formerly Cumberland County, which is part of a tract of Land surveyed in pursuance of a Warrant to William Lyon dated 10<sup>th</sup> April 1755 said to contain 310 acres (ob)th usual allowance for Roads &c Resurveyed the above part for Wille<sup>(ob)</sup>n and James Lyon 1<sup>st</sup> & 2<sup>nd</sup> December 1809.

Michael M. Morahan D.S.

To Andrew Porter <sup>(ob)</sup>quire  
Surveyor General of Penn<sup>(ob)</sup>sylvaniam

IN TESTIMONY that the above is a copy of the original remaining on file in the Department of Internal Affairs of Pennsylvania, made conformably to an Act of Assembly approved the 16th day of February, 1833, I have hereunto set my Hand and caused the Seal of said Department to be affixed at Harrisburg, this seventh day of September 1905

*George D. Brown*  
Secretary of Internal Affairs.